

Product: EXECUTIVE DESK

Ducale is a desk for executive offices with integrated base storage unit. It is characterized by a top and legs 6 cm thick and the use of mixed leather/veneer that define various areas of the top, used for different purposes.

The storage unit is available with four lengths, 60 cm, 90 cm, 145 cm and 205 cm.

The technical compartment with cables management is integrated in the storage unit.

The modesty panel connects the desk structural leg to the storage unit.

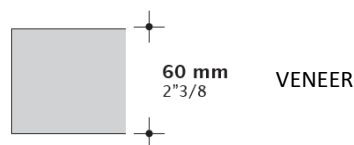


TECHNICAL FEATURES

Top:

Veneer: tops are made of wood particles 60 mm thick, veneer, leather or Time covered.

Soft Leather or Time.



Available in the following versions:

- Veneer + Time.
- Veneer + Soft Leather.

Legs: structure made of wood particles 60 mm thick, veneer covered.

Modesty panel: structure made of wood particles, veneer or Time covered.

Also available in Soft Leather covered with a surcharge.

Storage units: structure made of wood particles, veneer covered.

DIMENSIONS

Dimensions refer only to the tops.

Options:

W180 (70\"/>

W210 (82\"/>

FINISHES

Top:

Veneer: Eucalyptus or American Walnut.

Time or Soft Leather.

Legs:

Veneer: Eucalyptus or American Walnut.

Modesty panel:

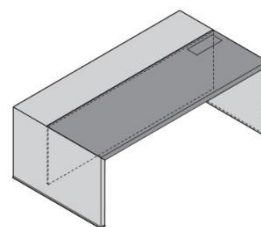
Veneer: Eucalyptus or American Walnut.

Time; Soft Leather.

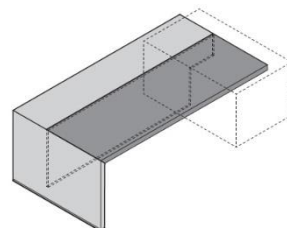
Storage units:

Veneer: Eucalyptus or American Walnut.

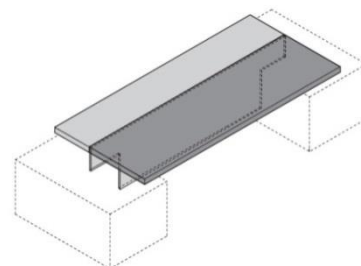
Executive desk



Executive desk with storage unit.

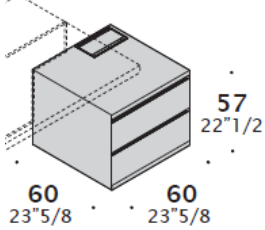


Executive desk with two storage units.

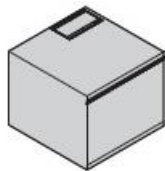


Storage units for executive desk.

60x60, H57 Bases.

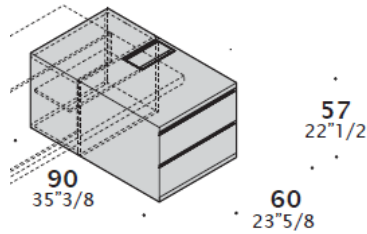


2 drawers.

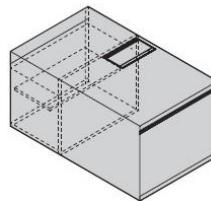


1 filing cabinet.

W90, H57 Bases.

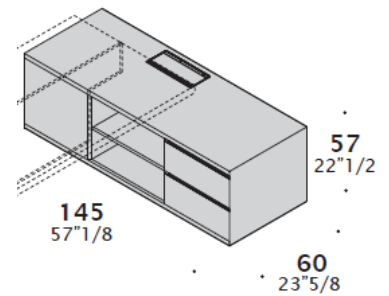


2 drawers.

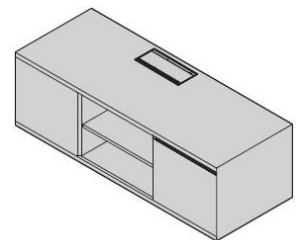


1 filing cabinet.

W145, H57 Bases.

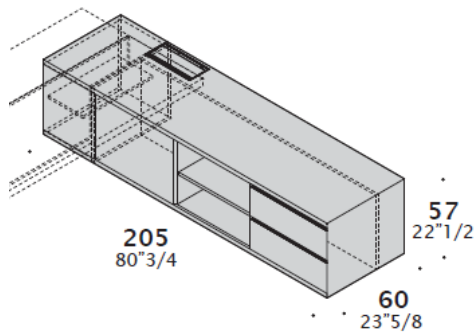


2 drawers.

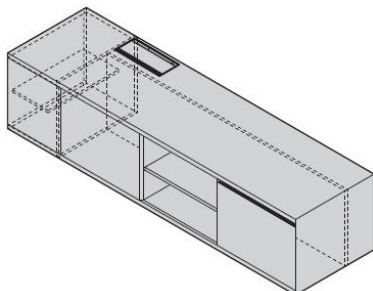


1 filing cabinet.

W205, H57 Bases.

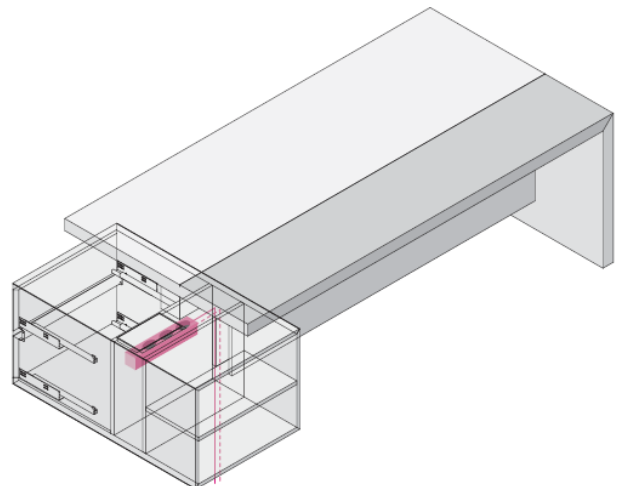


2 drawers.

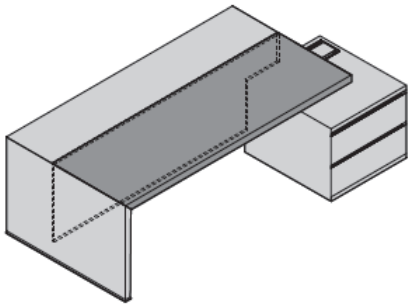


1 filing cabinet.

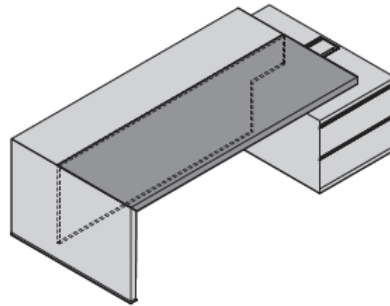
ELECTRIFICATION



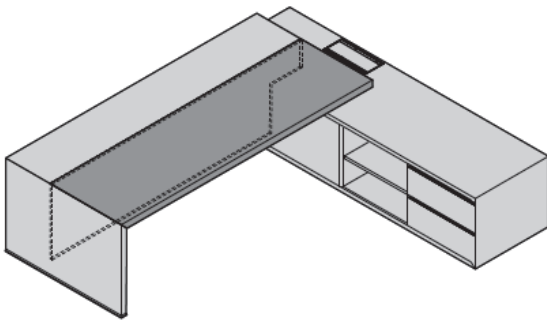
COMPOSITIONS



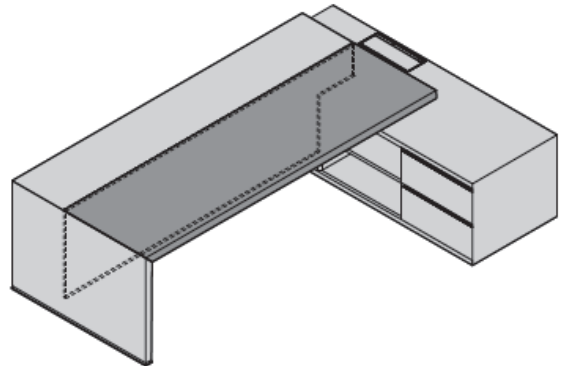
Total dimensions: W210 - 240 x D90



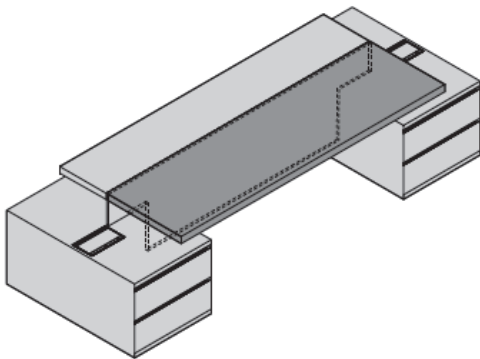
Total dimensions: W210 - 240 x D90



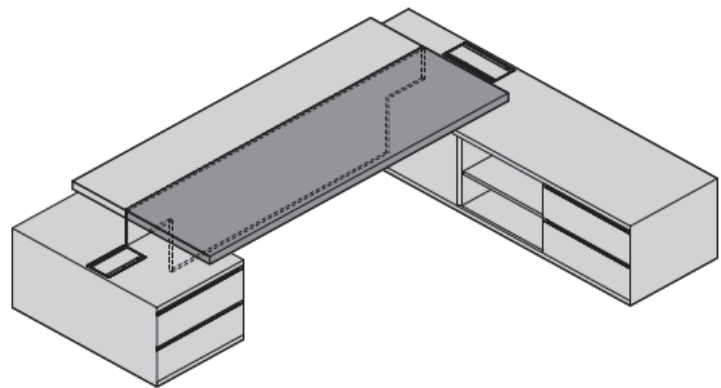
Total dimensions: W210 - 240 x D205



Total dimensions: W210 - 240 x D145



Total dimensions: W240 - 270 x D90



Total dimensions: W240 - 270 x D205